



# Study on Right-Left Asymmetry of Auditory System of Younger and Elderly Generation

2018

M2 Tsukuru Osawa

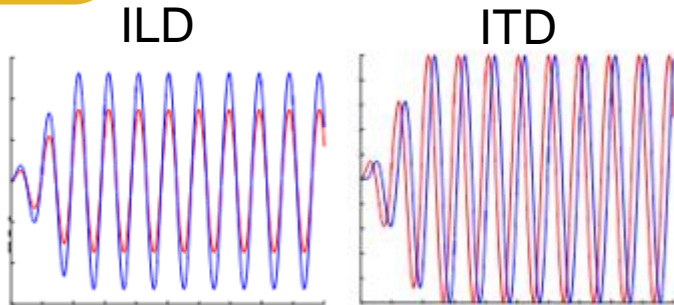
## Research flow

### Coming aging society

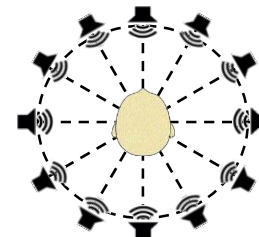
Necessity of telling sound direction to elderly people



Need to grasp fundamental sound localization ability



Difficult to localize sound in the car



Need to telling sound localization in the car

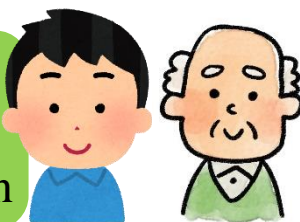
Improve sound localization conducted training

## Contents

Conduct experiment of sound localization casters younger and elderly people



Grasp fundamental sound localization ability and Grasp effect of aging about sound localization



Conduct training due to improve sound localization in the car



Confirm whether or not training effect